

PRIME PORTAL

K A H N

CATALOG

Windows

2025 Lineup



ABOUT

At KAHN Systems, we redefine the standards of modern fenestration with premium-quality window solutions that blend engineering precision, aesthetic excellence, and energy efficiency. Our expertise lies in crafting uPVC, aluminum, and wooden windows that elevate both the function and form of any space — from urban condominiums to bespoke residential estates.

Each window is the result of our commitment to innovation and performance. uPVC models offer multi-chambered insulation and effortless design versatility; aluminum frames impress with their structural strength, sleek minimalism, and enhanced security features; while our wooden windows showcase natural beauty, handcrafted detail, and exceptional thermal comfort.

Whether you are seeking replacement windows for renovation or premium solutions for new construction, KAHN Systems delivers tailored options that meet the strictest Canadian climate standards. Our windows are engineered to resist fading, warping, and drafts, while also contributing to lower energy bills and acoustic insulation.

With decades of European manufacturing experience and a growing footprint in North America, we serve architects, builders, and homeowners who demand more than just windows — they seek enduring quality and timeless design. Let us help you create bright, comfortable interiors with our expertly built, precision-installed window systems.

uPVC WINDOWS	4-23
ALUMINUM WINDOWS	24-42
WOOD WINDOWS	43-48

uPVC WINDOWS

uPVC windows are the foundation of the company's success. Eko-Okna S.A. gained its dominant position on the market by offering uPVC windows with outstanding parameters and properties. Initially in domestic markets and now also in global markets. uPVC windows from Kornice allow for a low level of thermal transmittance while maintaining affordable prices. Reliable production processes guarantee high repeatability and compliance with the established standards of the purchased windows.



BLUEEVOLUTION 82

3 Gaskets | 6 Chambers



IDEAL 4000

2 Gaskets | 5 Chambers



IDEAL 7000 NL

2 Gaskets | 5 Chambers



IDEAL 8000

3 Gaskets | 6 Chambers



ENERGETO 8000

3 Gaskets | 6 Chambers



IDEAL 70

2 Gaskets | 5 Chambers



IDEAL 4000 CASEMENT

2 Gaskets | **5** Chambers



S9000

3 Gaskets | **6** Chambers



IDEAL NEO

2 Gaskets | **5-6** Chambers



GREENEVOLUTION FLEX

2 Gaskets | **5** Chambers



AMERICAN SINGLE-HUNG



AMERICAN PICTURE HUNG



AMERICAN DOUBLE-HUNG



AMERICAN CASEMENT



AMERICAN PICTURE CASEMENT



AMERICAN AWNING



AMERICAN DOUBLE SLIDE SYSTEM



GRETA

3 Gaskets | **6** Chambers



BLU EVOLUTION 82

DESCRIPTION

- profile with a construction depth of 3-1/4" (82 mm)
- overall glazing thickness up to 2-1/16" (53 mm) | standard IGU 1-7/8" (48 mm)
- five anti-burglary locking points per sash

Innovative technology and the best thermal parameters are the characteristic features of energy-saving buildings and the BluEvolution 82 system. All products of this system are made in the V-Perfect welding technology.

* The above U-factor is a general achievable value for this window system. The detailed value can be provided with the selected IGU and product type.

0,15	3	6
U-Factor	Gaskets	Chambers



IDEAL 4000

DESCRIPTION

- profile with a construction depth of 2-3/4" (70 mm)
- overall glazing thickness up to 1-5/8" (42 mm) | standard IGU 15/16" (24 mm)
- two anti-burglar latches per sash
- available cores colors: cream in mass, brown, anthracite, white

One of our most versatile systems. It is used in the architecture of modern single-family and multi-family housing, as well as in the case of renovation. Economy combined with a standard solution – this is the definition of the Ideal 4000 system.

* The above U-factor is a general achievable value for this window system. The detailed value can be provided with the selected IGU and product type.

0,27 2 5
U-Factor Gaskets Chambers



IDEAL 7000 NL

DESCRIPTION

- profile with a construction depth of 4-3/4" (120 mm)
- overall glazing thickness up to 2-1/16" (52 mm) | standard IGU 1-7/8" (24 mm)
- two anti-burglary locking points per sash
- closed steel reinforcement in frame as standard
- available colors of core: white, cream, anthracite

0,27
U-Factor

2
Gaskets

5
Chambers

IDEAL is a popular warm window joinery system. Millions of homes around the world use various setups based on this solution. Users appreciate it because of its excellent thermal and acoustic insulation and outstanding price-to-quality ratio.

The IDEAL 7000 NL variation was designed for the Dutch market. Its profiles can be welded at an angle of 45° using aesthetic V-super and V-perfect techniques or at 90° using the HFL technology. This method of welding makes the windows look like wooden structures.

Clients can order windows in solid colours or with wood-like veneers. Veneers can be used on the inside and outside of the window. Thanks to the fact that they can be selected independently, the IDEAL 7000 NL windows will easily match any facade and interior.

* The above U-factor is a general achievable value for this window system. The detailed value can be provided with the selected IGU and product type.



IDEAL 8000

DESCRIPTION

- profile with a construction depth of 3-11/32" (85 mm)
- overall glazing thickness up to 2-1/16" (52 mm) | standard IGU 1-7/8" (48 mm)
- five anti-burglary locking points per sash
- closed steel reinforcement in frame as standard
- available colors of core: white, brown, anthracite

The latest generation. Windows made on the basis of the Ideal 8000 system provide thermal and acoustic insulation at the highest level. The system, available in the Energeto 8000 Powerdur version, is designed for energy-saving and passive construction.

* The above U-factor is a general achievable value for this window system. The detailed value can be provided with the selected IGU and product type.

0,15 3 6
U-Factor Gaskets Chambers



ENERGETO 8000

DESCRIPTION

- profile with a construction depth of 3-11/32" (85 mm)
- overall glazing thickness up to 2-1/16" (52 mm) | standard IGU 1-7/8" (48 mm)
- five anti-burglary locking points per sash
- assembly height of 119 mm (frame/sash)
- polymer Ultradur® High Speed reinforcement as standard
- available colors of core: white, brown, anthracite

In the Energeto 8000 system, steel is replaced with polymer, and the pane is glued to the sash. The warmest window in the most modern version. As standard, windows based on the Energeto 8000 system are made in the V-Perfect welding technology.

* The above U-factor is a general achievable value for this window system. The detailed value can be provided with the selected IGU and product type.

0,14	3	6
U-Factor	Gaskets	Chambers



IDEAL 70

DESCRIPTION

- profile with a construction depth of 2-3/4" (70 mm)
- overall glazing thickness up to 1-5/8" (42 mm) | standard IGU 15/16" (24 mm)
- four anti-burglary locking points per sash
- available colors of core: white, brown
- outward opening windows system

Outward opening window system. Intended for the UK and US market. Mullion profiles are welded in a 45-degree technology consistent with the trends prevailing on the these markets. Ideal 70 means harmonious shapes and attractive design.

* The above U-factor is a general achievable value for this window system. The detailed value can be provided with the selected IGU and product type.

0,3 2 5
U-Factor Gaskets Chambers



IDEAL 4000 CASEMENT

DESCRIPTION

- profile with a construction depth of 2-3/4" (70 mm)
- overall glazing thickness up to 1-5/8" (42 mm) | standard IGU 15/16" (24 mm)
- four anti-burglary locking points per sash
- available colors of core: white, brown, anthracite
- outward opening windows system

A system dedicated to the production of outward opening windows. Thanks to their classic appearance, they are appreciated by customers. Windows based on the Ideal 4000 Casement system have very good thermal properties. The system offers great design possibilities.

* The above U-factor is a general achievable value for this window system. The detailed value can be provided with the selected IGU and product type.

0,27 2 5
U-Factor Gaskets Chambers



S9000

DESCRIPTION

- profile with a construction depth of 3-1/4" (82,5 mm)
- closed steel reinforcement in frame as standard
- windows glazing with STV technology
- overall glazing thickness with STV up to 2-1/8" (54 mm) | standard IGU 1-7/8" (48 mm)
- overall glazing thickness without STV up to 2-1/16" (52 mm) | standard IGU 1-7/8" (48 mm)

The S9000 window system is distinguished primarily by their ability to build large structures without the need of additional mullions. As standard, windows made in the S9000 system are welded using the V-Perfect technology. The STV technology of gluing the pane dry was also used - the pane is glued to the sash rebate. Additionally, the profiles are colored with the acrylcolor technology.

* The above U-factor is a general achievable value for this window system. The detailed value can be provided with the selected IGU and product type.

0,15 3 6
U-Factor Gaskets Chambers



IDEAL NEO

DESCRIPTION

- profile with a construction depth of 3" (76 mm)
- overall glazing thickness up to 2-1/16" (52 mm) | standard IGU 15/16" (24 mm)
- five anti-burglary locking points per sash
- available colors of core: white, brown, anthracite
- height of frame with sash 4-1/2" (115 mm)
- available with composite reinforcement in the Energeto Neo version for the best thermal insulation of the window

Ideal Neo is a unique design, simple structures with exposed edges. They are perfect for newly built and renovated facilities. Ideal Neo is a system based on innovative technologies which ensures the comfort of using the windows for many years. This technology ensures the comfort of using the windows for many years.

* The above U-factor is a general achievable value for this window system. The detailed value can be provided with the selected IGU and product type.

0,26	2	5-6
U-Factor	Gaskets	Chambers



GREENEVOLUTION FLEX

DESCRIPTION

- profile with a construction depth of 3" (76 mm)
- overall glazing thickness up to 1-7/8" (48 mm)
- wide selection of veneers
- system also available with class A profiles

0,26
U-Factor

2
Gaskets

5
Chambers

The greenEvolution system is a new solution in the field of energy-efficient PVC window joinery, adapted to the requirements of passive construction. Its use makes it possible to significantly reduce heat loss and thus lower heating bills and reduce the carbon footprint. The enhanced parameters were achieved through the use of the MD centre gasket, improving the tightness of the window.

The classic shape of the profiles, combined with a wide range of available veneers, guarantees the ease of adapting greenEvolution windows to the vision of each investor.

* The above U-factor is a general achievable value for this window system. The detailed value can be provided with the selected IGU and product type.



AMERICAN SINGLE-HUNG

DESCRIPTION

- 3 1/4" installation depth
- ~3/4" double glazing units
- externally glazed
- integrated nailing fin for streamlined installation in new construction
- dedicated chamber for insect screens

The American Single-Hung sash lifts from the bottom, offering a classic and functional style. Unlike the Double-Hung window, the Single-Hung features fixed glazing in the upper part, enhancing its energy efficiency. With its smart design, this system provides excellent insulation and effortless operation, making these windows a reliable choice for any home.

The windows can be outfitted with a nailing fin for easy installation in new construction. As standard, they come with an insect screen and a sil leg that enhances the stability and rigidity of their profiles, preventing warping and rippling.



AMERICAN PICTURE HUNG

DESCRIPTION

- 3 1/4" installation depth
- ~3/4" double glazing units
- externally glazed
- integrated nailing fin for streamlined installation in new construction

The American Picture Hung offers picture (fixed) windows based on the Single-Hung/Double-Hung systems. They provide better thermal and acoustic parameters than their protoplasts.

The windows can be equipped with a nailing fin streamlining their installation process in new building projects. Additionally, a reinforced leg enhances profile stability, ensuring durability, and prevents any disfiguration of profiles.



AMERICAN DOUBLE-HUNG

DESCRIPTION

- 3 1/4" installation depth
- ~3/4" double glazing units
- externally glazed
- integrated nailing fin for streamlined installation in new construction

The American Double-Hung offers versatile functionality with two independent sashes that can be lifted from the bottom or lowered from the top. Cleaning is effortless as both sashes tilt inward, providing convenient access to the exterior and interior faces of the glass. With their space-saving design, Double-Hung windows maximize interior and exterior space, making them an excellent choice for any setting.

Integrated accessory grooves and a dedicated chamber for the insect screen improve the user experience, and an integrated nailing fin makes it easier to install in a new building. The fin is optional as it is not convenient when replacing old windows.



AMERICAN CASEMENT

DESCRIPTION

- 3 1/4" installation depth
- ~3/4" double glazing units
- externally glazed opens and closes using a crank and a side lever
- integrated nailing fin for streamlined installation in new construction
- efficient triple sealing

Casement windows are a versatile and practical choice for any home. They feature a hinged design that allows them to open outward to the right or left.

Operating these windows is effortless, thanks to a foldable crank mechanism that ensures smooth opening and closing. Often used above kitchen sinks or bathtubs, casement windows provide a clear view and ample ventilation. Their energy efficiency is noteworthy, as they offer excellent insulation compared to typical American window systems.

For new construction, Casement windows come with an integrated nailing fin. It makes attaching them to the wall easier. For renovation, the fin is not included.



AMERICAN PICTURE CASEMENT

DESCRIPTION

- 3 1/4" installation depth
- ~3/4" double glazing units
- externally glazed
- integrated nailing fin for streamlined installation in new construction
- efficient triple sealing

Casement windows are a versatile and practical choice for any home. They feature a hinged design that allows them to open outward to the right or left. Operating these windows is effortless, thanks to a foldable crank mechanism that ensures smooth opening and closing.

Often used above kitchen sinks or bathtubs, casement windows provide a clear view and ample ventilation. Their energy efficiency is noteworthy, as they offer excellent insulation compared to typical American window systems with their efficient triple sealing.

Customers can choose a version of the American Casement with an integrated nailing fin for quicker and safer installation in new buildings.



AMERICAN AWNING

DESCRIPTION

- 3 1/4" installation depth
- ~3/4" double glazing units
- externally glazed
- integrated nailing fin for streamlined installation in new construction
- efficient triple sealing

American Awning windows are a system of awning windows based on the American Casement system. They offer similar functionality, i.e. easy opening to the outside, energy efficiency above average, a clear view, and the ability to ventilate a room effortlessly.

Awning windows are the best match for kitchens, particularly in the sink area, where casement and traditional sash windows may not offer the expected functionality.

This system offers an optional nailing fin that can streamline the installation process in new buildings.



AMERICAN DOUBLE SLIDE SYSTEM

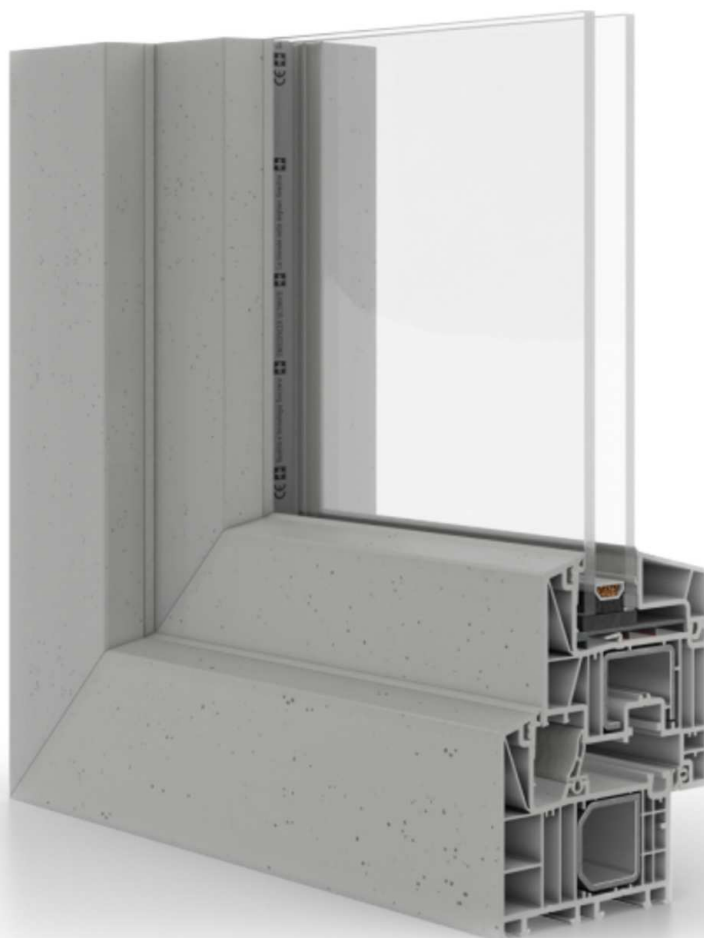
DESCRIPTION

- 3 1/4" installation depth
- ~3/4" double glazing units
- externally glazed
- integrated nailing fin for streamlined installation in new construction
- dedicated chamber for insect screens

American Double Slide sliding windows offer two active sashes that open horizontally, gliding smoothly along a track without the need for additional space. Ideal for tight walkways, porches, and patios, they provide convenient access to fresh air.

The system, crafted from a proprietary vinyl formula, undergoes rigorous performance testing to ensure exceptional weather resistance, color retention, and long-lasting durability.

American Double Slide windows can be equipped with an optional nailing fin to simplify installation in new construction. It also includes a dedicated chamber for an insect screen to prevent insects from getting through.



GRETA

DESCRIPTION

- installation depth 82 mm
- glazing with packages from 24 to 52 mm wide
- 5 anti-burglary points as standard
- profile in the color of architectural concrete

0,74
U-Factor

3
Gaskets

6
Chambers

Greta is a premium PVC window system designed for environmentally conscious and demanding users. It is produced entirely from recycled raw materials, which guarantees maximum reduction of the negative impact of its production on the natural environment. The use of recycled material is not only ecologically responsible, but also allows to maintain excellent performance parameters of the profiles and gives their surface a unique texture.

Greta PVC windows offer eco-friendly production from recycled materials, reducing environmental impact. Their unique concrete-like porous surface suits modern interiors and feels pleasant to the touch. Slim profiles ensure excellent insulation and support high-performance triple glazing. Ideal for those seeking a distinctive design for Scandinavian or industrial spaces, these windows reduce heating costs and maximize natural light for a healthier, more comfortable home.

Get to know Greta PVC windows better:

- water tightness: class 8A (for a single-sash window)
- air permeability: class 3
- resistance to wind load: class C4 (for a single-sash window)
- heat transfer coefficient of the window frame $U_f = 1.0 \text{ W/m}^2\text{K}$
- central seal improving the tightness of the window
- porous structure of the profiles, which can be felt by touch

*The above U_w value is given for a reference window with dimensions of 1230 x 1480 mm in the best thermal option.

ALUMINUM WINDOWS

We offer high-quality aluminum window and door systems, combining durability, modern aesthetics, and top performance.

Aluminum allows for large, stable structures with a sleek design, making it ideal for residential and commercial buildings. It ensures excellent insulation, smooth operation, and compatibility with advanced glazing. With reinforced profiles and high resistance to weather and corrosion, aluminum enhances security while requiring minimal maintenance. Choosing aluminum means investing in long-lasting, eco-friendly solutions that balance style, strength, and efficiency.



MB-45

2 Gaskets | 1 Chambers



MB-86 CASEMENT

2 Gaskets | 3 Chambers



IMPERIAL

2 Gaskets | 3 Chambers



MAXLIGHT

3 Gaskets | 3 Chambers



VS600

2 Gaskets | 3 Chambers



ECONOLINE

2 Gaskets | 1 Chambers



MB-79N

2 Gaskets | **3** Chambers



MASTERLINE 8

2 Gaskets | **3** Chambers



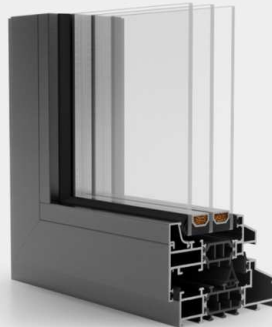
CONCEPTSYSTEM 77

2 Gaskets | **3** Chambers



MB-79N CASEMENT

3 Gaskets | **3** Chambers



SLIMLINE 38

3 Gaskets | **3** Chambers



CORTIZO CASEMENT

2 Gaskets | **6** Chambers



MASTERLINE WITH HIDDEN SASH

2 Gaskets | **3** Chambers



MASTERLINE10

3 Gaskets | **3** Chambers



COR 70 HO

2 Gaskets | **3** Chambers

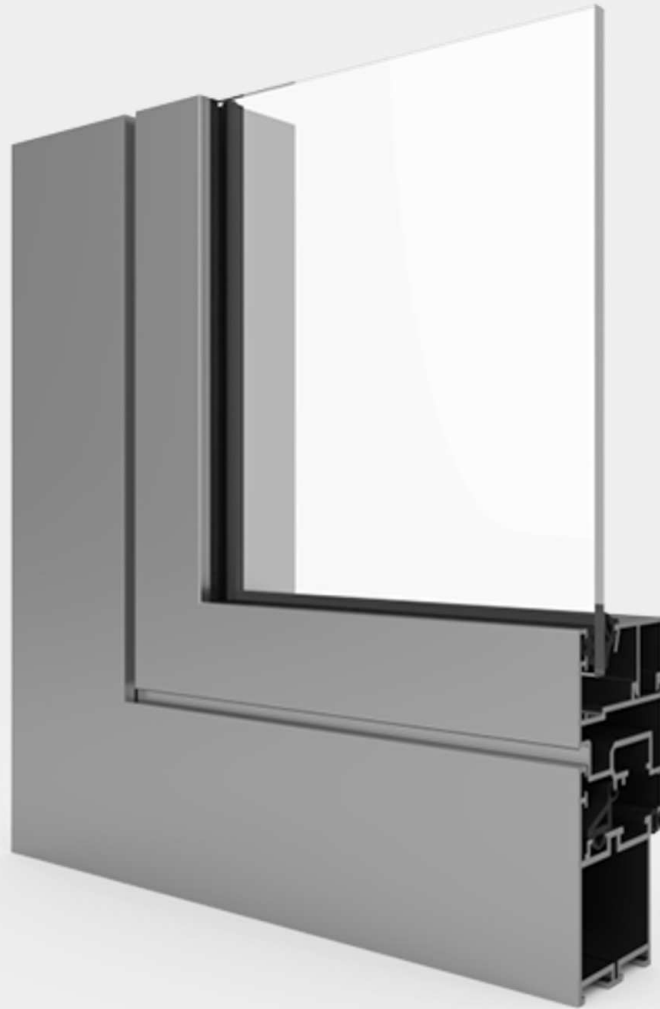


SLIMWALL 35



COR 70 INDUSTRIAL

2 Gaskets | **3** Chambers



MB-45

DESCRIPTION

- profile with a construction depth of 1-3/4" (45 mm)
- window sash with construction depth of 2-1/8" (54 mm)
- overall glazing thickness up to 1" (25 mm) – fixed window / up to 1-5/16" (34 mm) – operable window
- maximum size for tilt&turn window – H up to 94-1/2" (72-3/4"), L up to 49-1/4" (63")
- maximum window sash weight 286lb
- we lacquer in the full RAL K7 color palette and, on request, in other colors (use powder code)

The MB-45 system is intended only for the production of internal elements
- windows, cash boxes, vestibules, shopwindows, doors, partition walls.

2

Gaskets

1

Chambers



MB-86 CASEMENT

DESCRIPTION

- profile with a construction depth of 3" (77 mm)
- overall glazing thickness up to 2-3/8" (60 mm) | standard IGU 1-3/4" (44 mm)
- window sash with construction depth of 3-3/8" (86 mm)
- possible types: fixed, top-hung, side-hung
- system with an additional SI insulator as standard
- we lacquer in the full RAL K7 color palette and, on request, in other colors (use powder code)

MB-86 Casement is a system of outward opening windows. It allows you to create a top-hung or side-hung casement windows. Customers can choose from two types of hinges – ROTO roller hinges and SECURISTYLE friction hinge, in three variants: Sterling, Defender and Defender Egress.

* The above U-factor is a general achievable value for this window system. The detailed value can be provided with the selected IGU and product type.

0,00	2	1
U-Factor	Gaskets	Chambers



IMPERIAL

DESCRIPTION

- profile with a construction depth of 2-9/16" (65 mm)
- overall glazing thickness up to 2" (50 mm) – fixed window / up to 2-5/16" (59 mm) – operable window
- sash profile with depth of 2-15/16" (74 mm)
- we lacquer in the full RAL K7 color palette and, on request, in other colors (use powder code)

Modern aluminum windows with high thermal performance. The available wide range of system sections guarantees the required aesthetics and strength of the structure. Importantly – the profiles can be bent, which is why they are perfect for creating arched windows.

* The above U-factor is a general achievable value for this window system. The detailed value can be provided with the selected IGU and product type.

0,00	2	3
U-Factor	Gaskets	Chambers



MAXLIGHT

DESCRIPTION

- system with a thermal break
- smooth and slender profile line
- profile with a construction depth of 2-15/16" (74.8 mm)
- a wide range of colors: RAL palette, structural colors, wood-like colors, anode, bicolor
- system type: fixed window & opening inwards window
- height of frame with sash 2-3/4" (70 mm)
- we lacquer in the full RAL K7 color palette and, on request, in other colors (use powder code)

Max Light systems are dedicated primarily to modern architectural projects. The windows are unique thanks to the slim profiles used. The unique, minimalist design gives the structure a modern, industrial character.

* The above U-factor is a general achievable value for this window system. The detailed value can be provided with the selected IGU and product type.

0,17 3 3
U-Factor Gaskets Chambers



VS 600

DESCRIPTION

- profile with a construction depth of 5-3/16" (131 mm)
- overall glazing thickness up to 1-1/8" (28 mm) | standard IGU 15/16" (24 mm)
- we lacquer in the full RAL K7 color palette and, on request, in other colors (use powder code)

A system for the construction of lifted windows designed for the American and British markets. It has a unique spring-mounted hardware mechanism, thanks to which the sashes can be moved up and down. The use of additional fittings allows the sashes to be tilted for cleaning.

* The above U-factor is a general achievable value for this window system. The detailed value can be provided with the selected IGU and product type.

0,31	2	3
U-Factor	Gaskets	Chambers



ECONOLINE

DESCRIPTION

- profile with the construction depth of 51 mm
- sash (door/window) with the construction depth of 51 mm/60 mm
- glazing with glass units up to 34 mm
- equivalent to the MB-45 system
- system with thermal breaks
- filling in the 4/16ar/4th standard
- maximum door sash height 2400 mm
- maximum window sash height 2200 mm
- ROTO window fittings
- as standard, the windows have a handle and hinges in the same color as the joinery
- we lacquer in the full RAL K7 color palette and, on request, in other colors (use powder code)

Another aluminum system has been added to our offer - Econoline. The system does not have a thermal break, therefore, it is dedicated to be used indoors. It can be successfully used as a door, but also a partition that separates rooms.

2 1
Gaskets Chambers



MB-79N

DESCRIPTION

- installation depth: 2.76"
- available in three thermal versions: E, ST, and SI
- glazing with units up to 2.48" wide (windows) or up to 2.13" wide (fixed units/doors)
- windows available in RC2 and RC3 anti-burglary classes
- coated in the full RAL K7 palette and customized according to particular powder code

0,30
U-Factor

2
Gaskets

3
Chambers

The MB-79N aluminum window and door system is one of the most popular solutions made of this material for energy-efficient construction. Its modern design, combined with good performance and availability in large dimensions, makes it an excellent choice not only for residential buildings.

Key features of the MB-79N system:

- modern design perfectly suited to modern, elegant architecture
- three thermal options, including a solution for highly energy-efficient buildings
- effective sound insulation thanks to the possibility of using glazing up to 2.48" thick

Choose the MB-79N if you:

- appreciate the minimalist aesthetics of aluminum windows with distinctive right angles
- enjoy large glazed areas and interiors filled with natural light
- seek joinery in vivid colors and want to match its shade precisely

Learn more about MB-79N:

- frame depth: 2.76"
- sash depth: 3.11" (windows), 2.76" (doors)
- maximum dimensions of the sash of tilt and turn window - H up to 106.30", L up to 66.93"
- maximum dimensions of the door wing - H up to 110.24", L up to 55.12"



MASTERLINE 8

DESCRIPTION

- profile with a construction depth of 3" (77 mm)
- sash profile with depth of 3-7/16" (87 mm)
- overall glazing thickness up to 2-7/16" (62 mm)
- maximum sash weight: 441lb
- warm system with a thermal break available in several thermal variants
- we lacquer in the full RAL K7 color palette and, on request, in other colors (use powder code)

MasterLine 8 offers three levels of insulation, therefore it is used in buildings with a high level of insulation, energy-saving and even passive. Obtaining different levels of insulation is possible thanks to the use of technologically advanced and innovative materials.

2

Gaskets

3

Chambers



CONCEPT SYSTEM 77

DESCRIPTION

- profile with a construction depth of 2-11/16" (68 mm)
- depth of sash: 3" (77 mm)
- overall glazing thickness up to 2-1/2" (63 mm)
- we lacquer in the full RAL K7 color palette and, on request, in other colors (use powder code)

2

Gaskets

3

Chambers

Concept System CS-77 provides comprehensive solutions for all types of windows. Thanks to its unique design, it is even suitable for triple glazing.

The thermally insulated Concept System® 77 window system meets the highest standards of insulation and stability and is available in several anti-burglary classes. To perfectly suit any type of building, the system is available in various aesthetic variants: Functional, Renaissance and Hidden Vent.

These windows can be successfully used in all types of structures, even if it is necessary to meet the highest safety standards.



MB-79N CASEMENT

DESCRIPTION

- profile with a construction depth of 2-3/4" (70 mm)
- possible types: fixed, top-hung, side-hung
- friction hinges and roller hinges available
- glazed from the inside
- we lacquer in the full RAL K7 color palette and, on request, in other colors (use powder code)

0,30
U-Factor

3
Gaskets

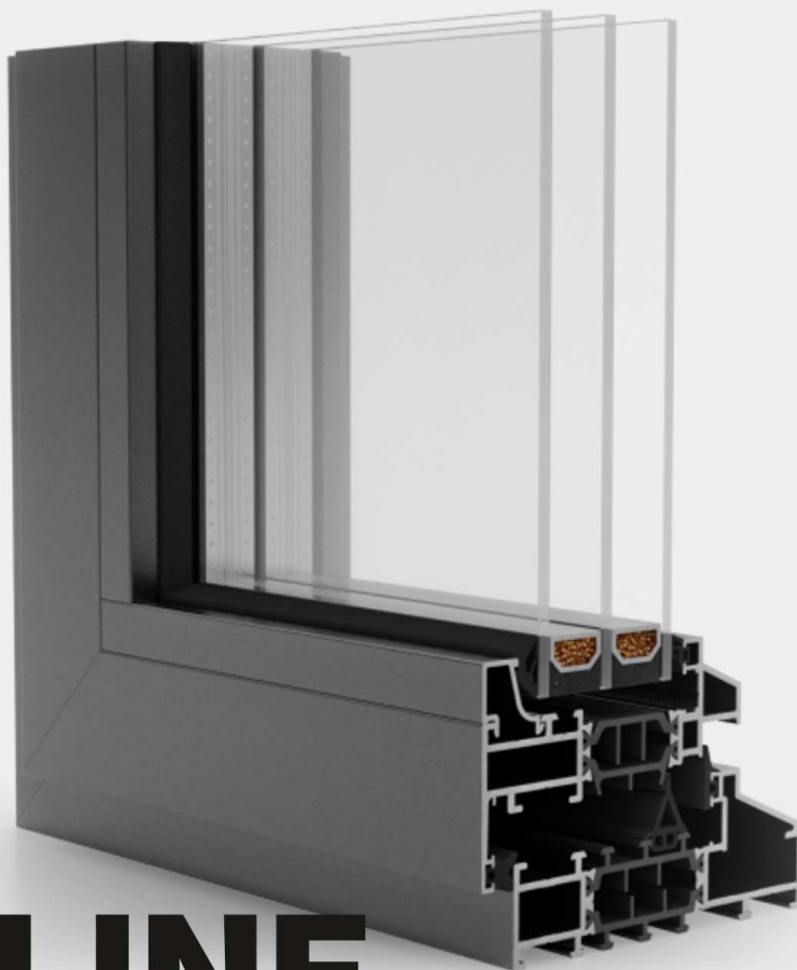
3
Chambers

Aluprof MB-79N Casement is the latest aluminium window system from Aluprof. It represents the pinnacle of affordable, high-performance solutions.

Their excellent kinetics allows for the creation of very narrow openable windows, which, together with their original design, makes them the optimal choice for numerous investments.

The system is available in two versions: Top Hung with outward-opened tilting windows and Side Hung, i.e. outward-opened casement windows. The Nail Fin, a frame available in the system, matches architectural solutions popular on the American market. It is a response to its needs.

* The above U-factor is a general achievable value for this window system. The detailed value can be provided with the selected IGU and product type.



SLIMLINE 38

DESCRIPTION

- profile with a construction depth from 3" up to 3-7/8" (76-99 mm) – depends of version
- overall glazing thickness up to 2-1/8" (55 mm)
- Sobinco tilt-and-turn hardware
- 3 aesthetic options: Classic, Ferro, Cubic
- powder coating in any color from the RAL palette
- we lacquer in the full RAL K7 color palette and, on request, in other colors (use powder code)

0,35
U-Factor

3
Gaskets

3
Chambers

The system's versatility is ensured by the availability of three aesthetic variants of profiles: Classic, Ferro and Cubic. The possibility of almost any mixture of frames, sashes and girders between variants makes it easy to adapt the ideal configuration.

SlimLine 38 Classic system has been developed for modern architecture focused on sprawling glazing. This variant mimics the slender look of steel windows with sloping exterior part.

SlimLine 38 Cubic is a system of aluminium windows inspired by the style of steel windows. The geometric, minimalist form of the SlimLine 38 Cubic profiles allows them to be used in modern construction and in the renovation of older buildings.

SlimLine 38 Ferro aluminum window system presents a minimalist elegance reminiscent of traditional steel windows. It was created for use in renovation projects and to complement modern designs that celebrate classic materials such as brick and steel.

SlimLine 38 can be equipped with a thermal break, which, together with three gaskets and a triple glazing package, provides the windows with very good thermal parameters.

* The above U-factor is a general achievable value for this window system. The detailed value can be provided with the selected IGU and product type.



CORTIZO CASEMENT

DESCRIPTION

- profile with a construction depth of 2-3/4" (70 mm)
- overall glazing thickness up 1-3/4" (44 mm)
- Top Hung – outward tilt window
- Side Hung – outward tilt window
- scissor fittings
- depth of sash: 2-3/4" (70 mm)
- we lacquer in the full RAL K7 color palette and, on request, in other colors (use powder code)

2

Gaskets

6

Chambers

Cortizo Casement is an outward-opening aluminium window system. It is an attractively priced development of the Spanish Cortizo range of products, valued for their modern design, durability and convenient operation. The windows are available with scissor fittings in the casement (Side Hung) and tilting (Top Hung) variants.

The standard Slim sash offers narrow, aesthetically attractive profiles, with the Slim EXT variant glazed from the outside. The HD (Heavy Duty - wide) sashes are their grander variation that enables the creation of taller and wider windows. Their size positively influences the amount of light reaching the interiors, the aesthetics of the profiles and the design possibilities. **The maximum dimensions of an HD window are as much as 1800 x 1800 mm with a sash weight of 100 kg.** A Steel variant is also available to match the industrial style.

The anodising process provides the profiles of Cortizo casement windows with their strength and modern visuals. **They are available in all RAL colours.** It is possible to apply two different colours on the inside and outside of the window.



MASTERLINE HIDDEN SASH

DESCRIPTION

- profile with a construction depth of 3" (77 mm)
- overall glazing thickness up to 2-9/16" (65 mm)
- sash with maximum height of 9' 2-1/4" (2800 mm)
- sash with maximum width of 3' 11-1/4" (1200 mm)
- Tilt&Turn Sobinco hardware
- Sash profile is invisible from the outside
- we lacquer in the full RAL K7 colour palette and, on request, in other colours (use powder code)

MasterLine 8 Hidden Vent is a development of the well-established MasterLine 8 system, in which the sash profile is covered by the outer frame. This gives the window the appearance of a fixed element, making it possible to create minimalist, uniform facades.

The **Hidden Vent** option employs Sobinco tilt-and-turn hardware allowing easy ventilation of rooms while maintaining the aesthetics of fixed solutions.

2

Gaskets

3

Chambers



MASTERLINE 10

DESCRIPTION

- construction depth: 97 mm
- frame and sash folding depth: 107 mm
- glazing with glass units up to 88 mm (78 mm fix sash)
- warm system with a thermal break
- maximum sash weight: 200 kg

The MasterLine 10 window and door system is characterised by excellent durability and resistance to mechanical and weather factors, and thanks to the presence of a thermal break, it is recommended for use in energy-efficient and passive buildings. The airtightness of the MasterLine 10 system is guaranteed by the use of central gaskets, improving the sash-to-frame sealing.

It has been designed with modern trends in mind, including those yet to come. Its slender profiles, combined with large glazings, look elegant and allow a wealth of natural light into the interior. The simple, geometric forms, on the other hand, are versatile, easy to fit into any architectural style.

*The value is given for a reference window with dimensions of 1230 x 1480 mm.

0,8
U-Factor

3
Gaskets

3
Chambers



COR 70 HO

DESCRIPTION

- 70 mm installation depth
- maximum glass thickness 46 mm
- thermal separator thickness 35 mm
- 3 types of movable mullions
- standard, central, or recessed handle
- painting in any RAL colour

1,0
U-Factor

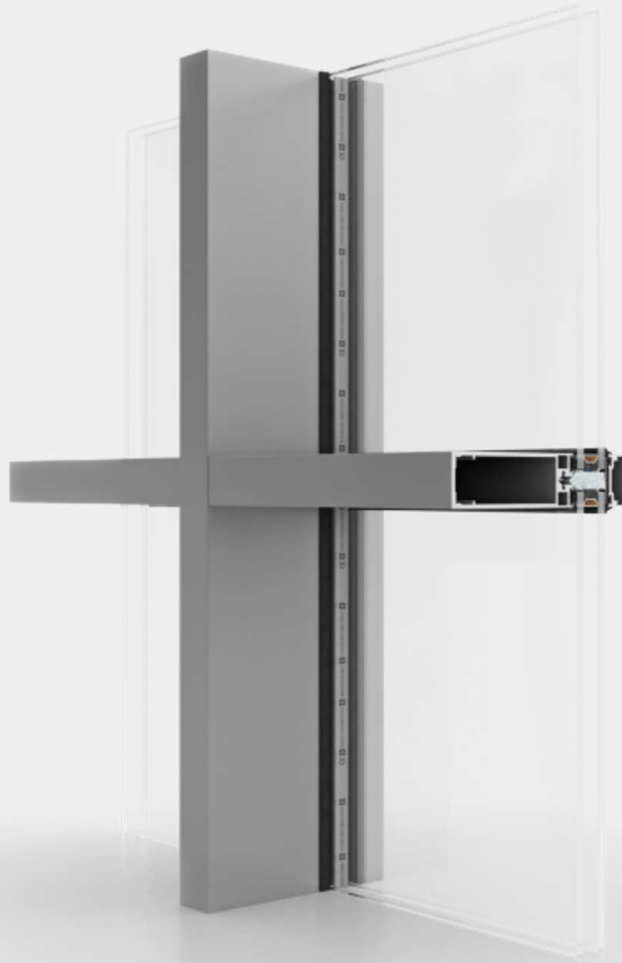
2
Gaskets

3
Chambers

Aluminium windows COR 70 HO stand out for their remarkably sleek and robust profiles, which result in an outstanding glazing-to-window size ratio. Glass comprising up to 85% of the window area allows an abundance of natural light to flood the interior.

COR 70 HO features concealed sashes, resulting in windows virtually indistinguishable from fixed glazing when viewed from the outside. This creates an impressive and seamless facade for a modern building.

The design of COR 70 HO distinguishes it from many other options. Its sashes offer either a central or a side-recessed handle that is virtually invisible from the front if one isn't aware of its location. Additionally, hidden hinges are available, and with reinforced fittings, the impressive window sash can extend up to a maximum height of 3.5 metres.



SLIMWALL 35

DESCRIPTION

- mullion depth ranges from 89 to 194 mm
- glazing with packages from 24 to 57 mm
- max. weight of outward opening casement 180 kg
- max. weight of fixed casement 450 kg

from 0,75
Uw

The elegant SlimWall 35 facade system offers minimalist aesthetics with parameters suitable for passive houses. It allows you to create huge, two-storey glazing with opening and fixed casements.

3 most important features of SlimWall 35:

- Minimalist design with thin, durable mullions
- Hidden drainage that does not break the appearance of the facade
- Excellent thermal parameters, suitable for passive houses

Choose SlimWall 35 if:

- You want to create an impressive facade with large glazing
- You want to combine the facade with windows and doors from the MasterLine 8 system
- Expect the possibility of opening parts of accommodations for better interior ventilation



COR 70 INDUSTRIAL

DESCRIPTION

- Installation depth: 70 mm
- Maximum glazing thickness: 55 mm
- Thermal break thickness: 35 mm
- Coating available in any RAL color

from 0,8
UW

2
Gaskets

3
Chambers

The COR 70 Industrial system, with its minimalism and sharply defined forms, aligns with the modern aesthetics of glass and steel. It boldly echoes the simplicity typical of steel solutions, allowing for rapid construction. This system is both striking and serene, exuding a cool elegance that can be invigorated with exciting RAL color options.

COR 70 Industrial enables the creation of warm solutions with excellent thermal and acoustic properties. It features an efficient thermal break and supports triple-glazed units with a very low thermal transmittance, significantly reducing heat loss compared to less energy-efficient systems.

The windows offer numerous configuration possibilities. Customers can choose from various glazing beads, two types of central seals, and three types of mullions in double-leaf configurations. Handles can be standard, central, or concealed within the sash.

Moreover, doors can open inward or outward, depending on customer preference and legal requirements for the project.

WOOD WINDOWS

Solid profiles made of three or four layers of wood, which guarantee long-term use are four varnish coatings.

Wooden windows are a proposal for people looking for the highest quality solutions with an excellent appearance and at the same time taking ecological issues seriously. The natural raw material used for the production of wooden windows allows achieving excellent thermal and acoustic parameters while leaving only a slight carbon footprint.

Timeless design and the variety of wood species make it possible to use ecological solutions in all projects.



NATURO 80 ALU

3 Gaskets | **3-4** Layers



NATURO 92

2 Gaskets | **4** Layers



NATURO 80

2 Gaskets | **3-4** Layers



ESPERIA LIFE 74 ALU

3 Gaskets | **4** Layers



ESPERIA LIFE 80

3 Gaskets | **4** Layers



NATURO 80 ALU

DESCRIPTION

- installation depth of the wooden profile 80 mm
- glazing with packages from 35 to 51 mm
- 3-4 layers of glued wood
- 4-layer paint coating
- types of timber: pine, spruce, meranti, oak
- types of wood finishing: colours from the azure palette, colours from the RAL palette, colourless varnish, colourless impregnation, raw wood
- aluminium overlays available in Gemini Classic, Gemini Quadrat and Gemini Quadrat FB versions
- we cooperate with suppliers who have FSC certification

0,80 3 3-4
Uw for Ug=0.5 Gaskets Layers

Naturo 80 ALU is a wooden window system that is gaining increasing popularity, especially in urban spaces. One of its great advantages is the aluminum cladding, which gives it the appearance of aluminum windows from the outside. This allows office buildings and apartment complexes to perfectly align with the trend of minimalist facades, commonly seen in the centers of large cities.

Naturo 80 ALU windows exude a warm charm, and the wood used in their creation comes from ethical sources. These products are highly energy-efficient, so by choosing them, investors minimize their carbon footprint not only during production but also throughout their use. Dry glazing technology, using the G-FIX system, ensures the proper pressure of the glass against the glazing gasket.

The aesthetics offered by Naturo 80 ALU are stunning. From the outside, the window presents expressive colours of varnished aluminium, and there is **a wide range of colours from the RAL palette to choose from**. From the inside, however, it offers a variety of possibilities and will adapt to the individual preferences of the client.

*The above value of Uw is given for a reference window with dimensions of 1230 x 1480 mm.



NATURO 92

DESCRIPTION

- installation depth 92 mm
- glazing in packages from 46 to 56 mm
- 4 layers of glued wood
- 4-layer paint coating
- types of timber: pine, spruce, meranti, oak
- types of wood finishing: colors from the stain palette, colors from the RAL palette, clear varnish, colorless impregnation, raw wood
- we cooperate with suppliers who have FSC certification

0,77 2 4
Uw for Ug=0.5 Gaskets Layers

The Naturo 92 wooden window system is intended for energy-saving investments and passive buildings. It was created for people who want to enjoy contact with a natural material, such as wood, without sacrificing high thermal insulation.

Naturo 92 is primarily an ecological material. Its use reduces the carbon footprint of the investment. It is also the most human-friendly system.

The wood is pleasant and warm to the touch and has a unique aesthetic. **They are characterised by antistatic properties, thanks to which dust settles on them more slowly and they can be washed less often.**

Naturo 92 profiles are exceptionally durable. **Their durability is achieved by combining four layers of dried wood and covering them with four layers of innovative varnishes.** Effective protection also reduces maintenance requirements to a minimum. The windows are covered by a multi-year warranty.

* The above Uw value is given for a reference window with dimensions of 1230 x 1480 mm.



NATURO 80

DESCRIPTION

- installation depth 80 mm
- glazing with packages from 35 to 44 mm
- 3-4 layers of glued wood
- 4-layer paint coating
- types of timber: pine, spruce, meranti, oak
- types of wood finishing: colors from the stain palette, colors from the RAL palette, clear varnish, colorless impregnation, raw wood
- we cooperate with suppliers who have FSC certification

0,9 2 3-4
Uw for Ug=0.5 Gaskets Layers

Naturo 80 is a system that is an evolution of Naturo 76, one of the most popular wooden solutions. The slightly increased installation depth allows the use of larger glazing packages, which **allows customers to be offered significantly improved thermal parameters of entire structures.**

The presented windows are made of ethically sourced raw material, which is subject to special processing to improve its parameters. **To create profiles, wood glued from several layers is used to obtain better static parameters and increase its durability.**

Naturo 80 windows are covered with four layers of varnishes, which protect them against harmful factors and allow for achieving outstanding aesthetic values.

* The above Uw value is given for a reference window with dimensions of 1230 x 1480 mm.



ESPERIA LIFE 74 ALU

DESCRIPTION

- overall glazing thickness up to 2-15/16" (74 mm)
- overall glazing thickness up to 1-7/8" (48 mm)
- wood-aluminum profile
- 4-layer paint coating
- profiles made of 4 layers of wood
- types of timber: pine, spruce, meranti, oak
- types of wood finishing: colours from the azure palette, colours from the RAL palette, clear varnish, colourless impregnation, raw wood
- we cooperate with suppliers who have FSC certification

The modern window system with the smallest construction depth of the profile from the whole Esperia Life line. Wood and aluminum profile and the ability to use "thicker" glass allow the energy efficiency of this profile.

The colour palette presented on the Eko-Okna's website is for illustrative purposes only and cannot be a clear reference to the actual colours or wood grain.

3

Gaskets

4

Layers



ESPERIA LIFE 80

DESCRIPTION

- profile with a construction depth of 3-1/8" (80 mm)
- overall glazing thickness up to 1-7/8" (48 mm)
- 4-layer paint coating
- profiles made of 4 layers of wood
- types of timber: pine, spruce, meranti, oak
- types of wood finishing: colours from the azure palette, colours from the RAL palette, clear varnish, colourless impregnation, raw wood
- we cooperate with suppliers who have FSC certification

Esperia Life windows combine elegance and functionality. These are warm windows with narrow profiles, thanks to which up to 12% more natural light gets into the interior. They are suitable for both new buildings and renovation.

* The above U-factor is a general achievable value for this window system. The detailed value can be provided with the selected IGU and product type.

0,00	3	4
U-Factor	Gaskets	Layers

PRIME PORTAL

K A H N

Prime Portal Inc | KAHN | primeportal.ca | thekahn.ca | info@primeportal.ca | 647 863 0033
